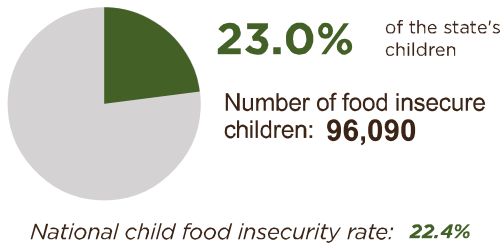




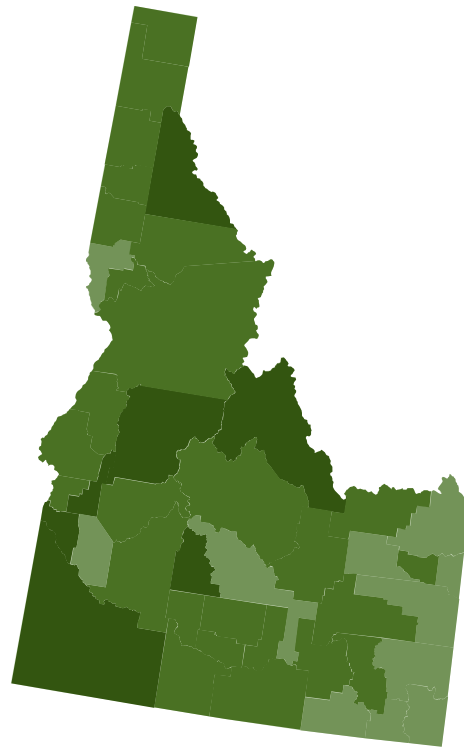
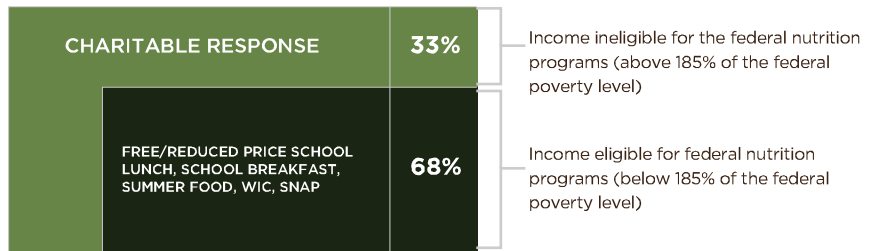
Idaho



CHILD FOOD INSECURITY RATE



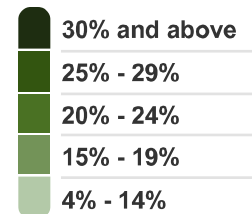
ESTIMATED PROGRAM ELIGIBILITY AMONG FOOD INSECURE CHILDREN



FIVE counties with the highest child food insecurity rates

- Lemhi
- Valley
- Camas
- Owyhee
- Gem

Child Food Insecurity Rates



Child hunger exists in every county in the United States. However, as Feeding America's Map the Meal Gap study shows, child food insecurity looks different from county to county. Anti-hunger programs work to protect millions of children from hunger, but the report also reveals that many children in need of food assistance do not qualify for federal child nutrition programs and their families must rely on charity alone to put food on the table. Map the Meal Gap provides data about the prevalence of child food insecurity at the local level, including the share of children who are income-eligible for federal child nutrition programs like free or reduced price school meals. By providing information about child hunger at the local level, Map the Meal Gap can help policymakers and service providers alike identify strategies to best reach families and children in need of food assistance.



Visit feedingamerica.org/mapthegap for more information.
 ©2013 Feeding America. All rights reserved.

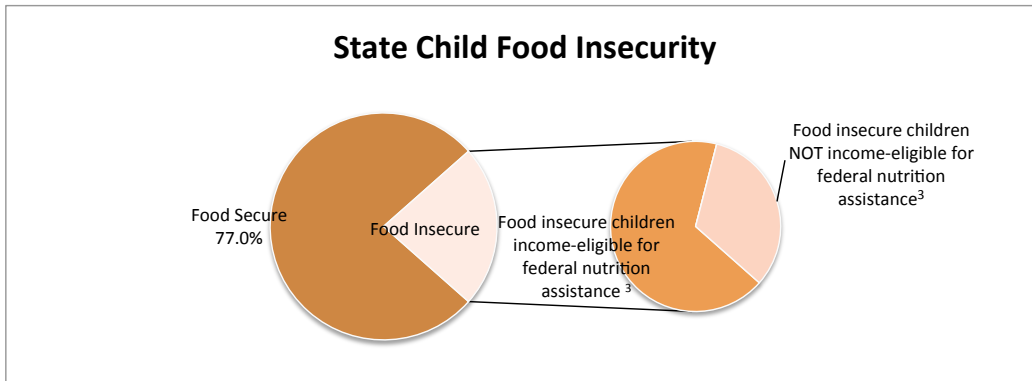
Map the Meal Gap 2013: Child Food Insecurity State Overview

Idaho

Population under 18 years old

416,818

Child food insecurity rate (2011) ^{1,2}	23.0%
Estimated number food insecure children	96,090



For additional data and maps by county, state, and congressional district, please visit www.feedingamerica.org/mapthegap.

Gundersen, C., Waxman, E., Engelhard, E., Satoh, A., & Chawla, N. Map the Meal Gap: Child Food Insecurity 2013. This research is generously supported by the Howard G. Buffett Foundation and The Nielsen Company.

¹A child (under 18 years old) is defined as being food insecure if he or she lives in a household experiencing food insecurity. The food insecurity measures here are derived from the measures of food insecurity found in the nationally representative Current Population Survey. Since 1995, those measures have been calculated from responses to a series of questions about conditions and behaviors known to characterize households having difficulty meeting basic food needs. For more details about how food insecurity is calculated, see Coleman-Jensen, A., Nord, M., Andrews, M. & Carlson, S. "Household Food Security in the United States in 2011." U.S. Department of Agriculture, Economic Research Service: Washington D.C. 2012.

² The statistical model for estimating food insecurity in 2013 differs slightly from the model used in 2012. The updated 2013 model includes "homeownership" in addition to the variables used in previous years to account for household assets and help produce more accurate estimates of food insecurity at the local level. For more information about these factors, please see the technical brief or supplemental methodology information on HungerNet.

³Program eligibility for child hunger programs such as National School Lunch Program, School Breakfast, and other federal nutrition programs is determined in part by these income thresholds. These thresholds vary by state.



Map the Meal Gap 2013

Idaho Child Food Insecurity by County in 2011¹



County	Food insecurity rate (full population) ²	Population under 18 years old	Child food insecurity rate ²	Estimated number food insecure children (rounded)	Food insecure children likely income-eligible for federal nutrition assistance ³	Food insecure children likely NOT income-eligible for federal nutrition assistance ³
Ada	15.0%	102,849	17.7%	18,200	57%	43%
Adams	19.7%	768	23.0%	180	76%	24%
Bannock	15.5%	22,243	19.7%	4,370	63%	37%
Bear Lake	12.5%	1,657	16.9%	280	75%	25%
Benewah	18.9%	2,233	23.8%	530	92%	8%
Bingham	14.1%	14,767	20.1%	2,970	70%	31%
Blaine	14.2%	5,144	18.0%	930	51%	49%
Boise	16.5%	1,562	22.4%	350	55%	45%
Bonner	18.1%	8,889	24.2%	2,150	67%	33%
Bonneville	13.6%	32,089	17.3%	5,540	72%	29%
Boundary	18.4%	2,773	25.0%	690	89%	12%
Butte	14.0%	765	19.1%	150	63%	37%
Camas	17.5%	309	25.6%	80	83%	17%
Canyon	17.4%	58,887	25.1%	14,760	73%	27%
Caribou	12.9%	1,943	17.1%	330	67%	33%
Cassia	15.2%	7,377	21.7%	1,600	77%	23%
Clark	13.2%	243	25.0%	60	91%	9%
Clearwater	18.0%	1,539	22.9%	350	73%	27%
Custer	14.4%	920	20.9%	190	83%	18%
Elmore	15.8%	7,654	21.5%	1,650	73%	27%
Franklin	12.4%	4,451	16.7%	740	78%	22%
Fremont	13.2%	4,098	18.1%	740	97%	3%
Gem	17.4%	4,158	25.2%	1,050	67%	33%
Gooding	14.2%	4,501	21.3%	960	72%	28%
Idaho	17.6%	3,391	24.6%	830	68%	32%
Jefferson	12.8%	8,927	17.4%	1,550	73%	28%
Jerome	15.9%	6,797	24.7%	1,680	75%	25%
Kootenai	16.6%	34,084	21.0%	7,140	64%	36%
Latah	18.4%	6,832	19.2%	1,310	60%	40%
Lemhi	18.2%	1,555	28.3%	440	75%	25%
Lewis	15.2%	827	23.7%	200	78%	22%
Lincoln	17.2%	1,594	23.4%	370	79%	21%
Madison	21.3%	9,505	21.1%	2,000	71%	29%
Minidoka	13.9%	5,804	23.2%	1,340	74%	26%
Nez Perce	14.6%	8,532	19.0%	1,620	60%	40%
Oneida	12.6%	1,237	16.9%	210	75%	25%
Owyhee	15.5%	3,363	25.4%	850	74%	26%
Payette	16.0%	6,492	22.5%	1,460	69%	31%
Power	14.8%	2,366	22.7%	540	83%	17%
Shoshone	19.7%	2,699	25.1%	680	65%	35%
Teton	13.3%	2,843	17.3%	490	62%	38%
Twin Falls	15.4%	20,745	19.9%	4,130	73%	27%
Valley	19.1%	1,964	27.9%	550	82%	18%
Washington	15.6%	2,458	21.2%	520	76%	24%
State Total⁴	17.3%	416,818	23.0%	96,090	67%	33%

For additional data and maps by county, state, and congressional district, please visit www.feedingamerica.org/mapthegap.

Gundersen, C., Waxman, E., Engelhard, E., Satoh, A., & Chawla, N. Map the Meal Gap: Child Food Insecurity 2013. This research is generously supported by the Howard G. Buffett Foundation and The Nielsen Company.

¹Map the Meal Gap's child food insecurity rates are determined using data from the 2001-2011 Current Population Survey on children under 18 years old in food insecure households; data from the 2011 American Community Survey on median family incomes for households with children, child poverty rates, home ownership, and race and ethnic demographics among children; and 2011 data from the Bureau of Labor Statistics on unemployment rates.

² The statistical model for estimating food insecurity in 2013 differs slightly from the model used in 2012. The updated 2013 model includes "homeownership" in addition to the variables used in previous years to account for household assets and help produce more accurate estimates of food insecurity at the local level. For more information about these factors, please see the technical brief or supplemental methodology information on HungerNet.

³Numbers reflect percentage of food insecure children living in households with incomes above or below 185% of the federal poverty guideline for 2011. Eligibility for federal child nutrition programs is determined in part by income thresholds which can vary by state.

Congressional District	Food insecurity rate (full population) ²	Child food insecurity rate ²	Estimated number food insecure children (rounded)	Food insecure children likely income-eligible for federal nutrition assistance ³	Food insecure children likely NOT income-eligible for federal nutrition assistance ³
1	17.7%	23.0%	51,940	67%	33%
2	16.8%	21.9%	44,150	68%	32%

For additional data and maps by county, state, and congressional district, please visit www.feedingamerica.org/mapthegap.

Gundersen, C., Waxman, E., Engelhard, E., Satoh, A., & Chawla, N. Map the Meal Gap: Child Food Insecurity 2013. This research is generously supported by the Howard G. Buffett Foundation and The Nielsen Company.

¹Map the Meal Gap's child food insecurity rates are determined using data from the 2011 Current Population Survey on children under 18 years old in food insecure households; data from the 2011 American Community Survey on median family incomes for households with children, child poverty rates, home ownership, and race and ethnic demographics among children; and 2011 data from the Bureau of Labor Statistics on unemployment rates.

²The statistical model for estimating food insecurity in 2013 differs slightly from the model used in 2012. The updated 2013 model includes "homeownership" in addition to the variables used in previous years to account for household assets and help produce more accurate estimates of food insecurity at the local level. For more information about these factors, please see the technical brief or supplemental methodology information on HungerNet.

³Numbers reflect percentage of food insecure children living in households with incomes above or below 185% of the federal poverty guideline for 2011. Eligibility for federal child nutrition programs is determined in part by income thresholds which can vary by state.