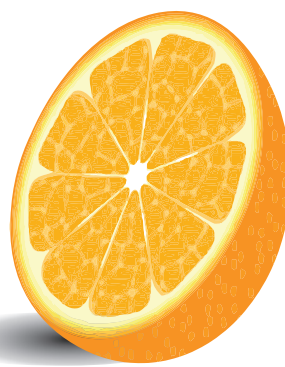




Picnic in the park



June 5 - August 15, 2014

*no meal service on July 4

The Idaho Foodbank will provide the USDA's free summer feeding program at the following locations:

Borah Park	Phillippi Park
Cassia Park	Pierce Park Elementary
Davis Park Apartments	Pioneer Square Apartments
Elm Grove Park	Redwood Park
Fairview Crossing Apartments	River Pointe Park (behind Garden City Library)
Ivywild Park	Shannon Glen Apartments
Latah Village Apartments	Sunset Park
Liberty Park	Valley View Elementary
Manitou Park	Veterans Park
Mtn. View Park	Waterfront Park (next to Learning Lab)
Mystic Cove Park	Winstead Park
Northwest Pointe Apartments	Wylie St. Station Apartments
Oak Park Village Apartments	
Owyhee Park	

Boise School District Locations:

Frank Church High School	South Jr. High
Garfield Elementary	West Jr. High
Horizon Elementary	Whitney Elementary
Morley Nelson Elementary	Whittier Elementary
Riverglen Jr. High	

FREE LUNCH

For All Hungry
Children
Ages 1 - 18

Monday - Friday

*Please note dates and locations
are subject to change.*

For service times and
more information,
please visit
idahofoodbank.org
or call 208-336-9643

USDA is an equal opportunity
provider and employer



Literacy in the Park is a summer reading program that will be held from June 9th - August 8th. It includes a story time, activities, and books to borrow from Little Libraries.

For more information, contact
Julie Armstrong 208-334-2150

Literacy in the Park activities will be on:

Mondays - Veteran's Park, Sunset Park, Owyhee Park, Oak Park Village, Cassia Park, Phillippi Park, River Pointe Park

Tuesdays - Borah Park, Liberty Park, Mountain View Park, Latah Apartments, Valley View Elementary

Wednesdays - Ivywild Park, Redwood Park, Northwest Pointe Apartments, Wylie Street Station Apartments, Pierce Park Elementary

Thursdays - Manitou Park, Fairview Crossing Apartments, Mystic Cove Park, Waterfront Park, Pioneer Square Apartments, Shannon Glen Apartments

Fridays - Winstead Park, Valley View Elementary, Davis Park Apartments, Elm Grove Park



Brought to you
by the Idaho
Commission for
Libraries and your
local library

