



The Idaho Foodbank
3630 E Commercial St.
Meridian, ID 83642

NONPROFIT ORG.
U.S. POSTAGE
PAID
PERMIT NO. 810
BOISE



FEEDING IDAHO FAMILIES

THE IDAHO FOODBANK®



HUNGER IS **REAL**

2022
FISCAL
YEAR
ANNUAL
REPORT

MAY 2021 – APRIL 2022



8.7% of Idahoans are food insecure ■

10.5% children are food insecure ■

85% of distributed food considered nutritious ■

FOOD AND HEALTHY COMMUNITIES

Dear Friends,

At The Idaho Foodbank, our vision is to move people from a place of hunger to one of health by building and supporting healthy communities. We strive to help Idahoans who are struggling to not just survive but thrive and, in turn, meet our vision of a hunger-free Idaho.

In fiscal year (FY) 2022, 85 percent of the food we distributed was nutritious. This includes fruits and vegetables, dairy, and protein. Individuals who are food insecure are often at higher risk of developing a chronic disease. Some common chronic diseases, including diabetes and heart disease, can be managed or prevented with a balanced diet. But it is not enough to just provide nutritious food – information and education on how to prepare healthy, balanced meals and how to make healthy food choices when shopping empowers people to make the best choices for themselves and their families. Providing nutrition education is an ongoing initiative at The Idaho Foodbank.

We know that we cannot build healthy communities on our own – collaboration is the key to creating long-term success. The Idaho Foodbank partners with healthcare organizations to educate neighbors about the link between food insecurity and health. We also share information about available healthcare services with neighbors who are struggling to make ends meet. To deepen our understanding of populations experiencing hunger at a higher rate, we have a focus on building and strengthening lines of communication with key communities that have traditionally been underserved based on population or geography. Our goal is to expand and refine our services to ensure all Idahoans, regardless of where they live or their background, have access to nutritious food.

This newsletter highlights the needs that Idahoans are experiencing and how we are working to meet those needs. There is still more for us to do and learn together and . The Idaho Foodbank is committed to providing healthy food, delivering education and promoting strategic collaboration to create a hunger-free and healthy Idaho.

Thank you,

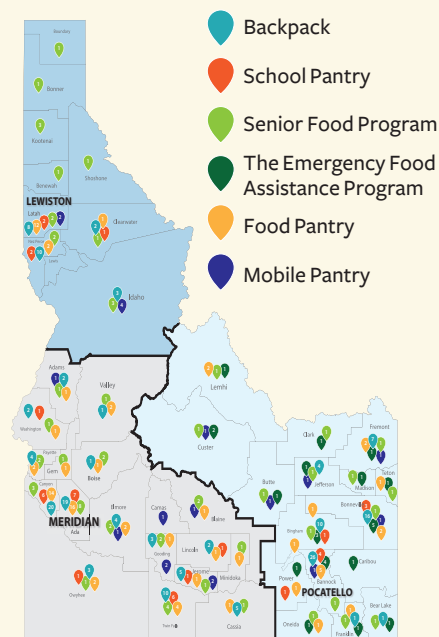
Karen Vauk, President/CEO



Delivering Hope Statewide

FOOD DISTRIBUTED IN IDAHO

- **27,234,474** pounds distributed statewide
- **17,816,220** pounds in southwest
- **6,731,620** pounds in eastern
- **2,686,906** pounds in north central
- **85%** food considered nutritious
- **85%** food donated to the Foodbank
- **482** community distribution partners statewide



Programs Promote Healthy Families and Communities

BACKPACK PROGRAM:

- 1,976 children served
- 65,000 backpacks distributed statewide

SCHOOL PANTRY PROGRAM:

- 15,916 households served
- Food for 353,278 meals distributed

MOBILE PANTRY PROGRAM:

- 14,560 people served (monthly average)
- 174,725 served over the year/statewide
- 632 mobile distributions
- 55 communities served

SENIOR NUTRITION PROGRAM (CSFP):

- 2,200 seniors served monthly
- 24,418 food boxes distributed statewide

FOOD CATEGORIES BY THE NUMBERS



FRUIT/VEGETABLE
FY22 Distributed: 34%



GRAIN
FY22 Distributed: 13%



BEVERAGE
FY22 Distributed: 2%



PROTEIN
FY22 Distributed: 17%

Meeting the Need Through Responsible Growth

PEOPLE SERVED AND VOLUNTEERISM

- As many as **184,650** people served any given month (statewide):
 - 111,150 people served in Southwest
 - 51,000 people served in East
 - 22,500 people served in North Central
- **\$1** can provide food for four meals
- **20,780** volunteers
- **58,302** volunteer hours - Equivalent to 28 full time employess



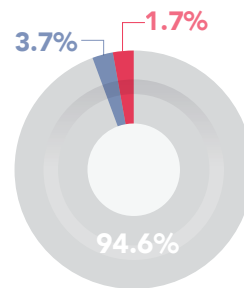
FINANCIAL STATEMENT

REVENUE

	FY 2021	FY 2022
Value of Donated Food	\$50,515,740	\$45,009,066
Donated Funds	\$18,014,829	\$10,862,974
In-Kind Donations	\$376,715	\$325,026
Program Services and Other	\$4,613,830	\$2,287,815
Total Revenue:	\$73,521,114	\$58,484,881

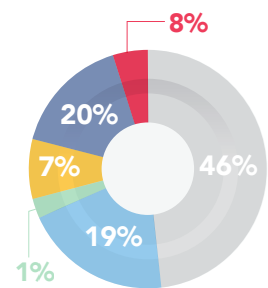
PROGRAM EXPENSES

	FY 2021	FY 2022
Purchased Food	\$3,143,374	\$4,227,109
Donated Food and Freight	\$46,402,028	\$43,890,334
Other	\$8,011,880	\$5,138,468
Total Program Expenses:	\$57,557,282	\$53,255,911
Administrative and Fundraising	\$2,809,973	\$3,035,378
Total Expenses:	\$60,367,255	\$56,291,289



EXPENSES

- Program/Services
- Fundraising
- Administration



REVENUES

- Individuals
- Corporations
- Foundations
- Organizations
- Government
- Other



The only Idaho nonprofit to receive a four-star rating for 12 consecutive years.

For additional information visit:
idahofoodbank.org

FOOD CATEGORIES BY THE NUMBERS



DAIRY
FY22 Distributed: 14%



READY-MADE MEALS
FY22 Distributed: 3%

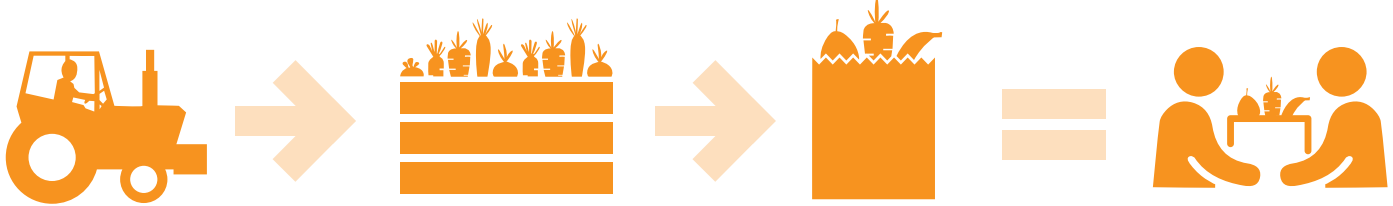


MIXED AND ASSORTED
(grocery store food rescue, food drive)
FY22 Distributed: 14%



NOT INTENTIONALLY SOURCED
(dessert/candy, non-food, condiments)
FY22 Distributed: 3%

THE FLOW OF FOOD



We partner with growers, manufacturers, retailers, and producers to secure nutritious food, including fresh fruits and vegetables.

The Foodbank receives food and produce in large and small quantities, including by the truckload.

Volunteers help us repack food, including fruits and vegetables, into smaller family-sized packages.

Food assistance reaches families and individuals through our programs and partner network.

It is impossible for The Idaho Foodbank to do what we do without broad support from across the state. But how does that support – be it in the form of a food donation, funds or volunteer time – create hunger-free and healthier communities?



supplement food donations with large-scale purchases. This includes purchasing food for our Backpack Program, which provides food over the weekend for Idaho children in need. This is a specific type of food that is nutritious and easy for kids to open and prepare in case there is not an adult nearby.

WE RECEIVE AND STORE THE FOOD:

Food donations go to one of our three warehouses in Meridian, Pocatello, or Lewiston. Our three warehouses maintain top safety ratings to ensure the safe receipt and storage of all food.

Our main warehouse in Meridian is 65,000 square feet, which allows us the storage space to serve the entire state.

Our aim is to move food to communities as quickly as possible, but space to store food is a key part of any food distribution operation.



WE INSPECT FOOD AND DELIVER IT TO COMMUNITY FOOD DISTRIBUTION PARTNERS:

With the help of volunteers from across the state, The Idaho Foodbank Team sorts and inspects donated food. This includes removing food that is damaged or expired and ensuring food is safe. We believe everyone should have access to safe, wholesome food.



PARTNERS DISTRIBUTE FOOD TO NEIGHBORS WHO NEED IT:

Food assistance gets to families and individuals through our network of nonprofit partner organizations. Our partner organizations pick up food at our warehouses or we deliver the food to them so they can get it to the people in their community who need it. We also distribute food directly to neighbors across the state.

SUPPORTERS DONATE FOOD:

The Idaho Foodbank receives food donations from grocery stores, agricultural producers, food distributors and manufacturers, and individual donations from food drives.

26% of the food distributed in fiscal year (FY) 2022 was donated from manufacturers, distributors, and growers.

WE PURCHASE FOOD:

To make sure we have a variety of nutritious food and we can meet the need, we



HOW DONORS HELP THE FOODBANK SOLVE HUNGER



ONE

Your gift is the first critical step in feeding people in Idaho who are at risk of hunger.



TWO

We build partnerships with: • Growers • Processors • Retailers • Manufacturers • Wholesalers ... And encourage them to donate groceries that might otherwise go to waste.



THREE

Our fleet of trucks moves the food within our network, making sure donated food goes where it is needed most.



FOUR

Community partners ensure safe storage and distribute the food to neighbors in need.



FIVE

Food reaches people at: • Food pantries • Soup kitchens • Senior centers • Homeless shelters • Youth programs